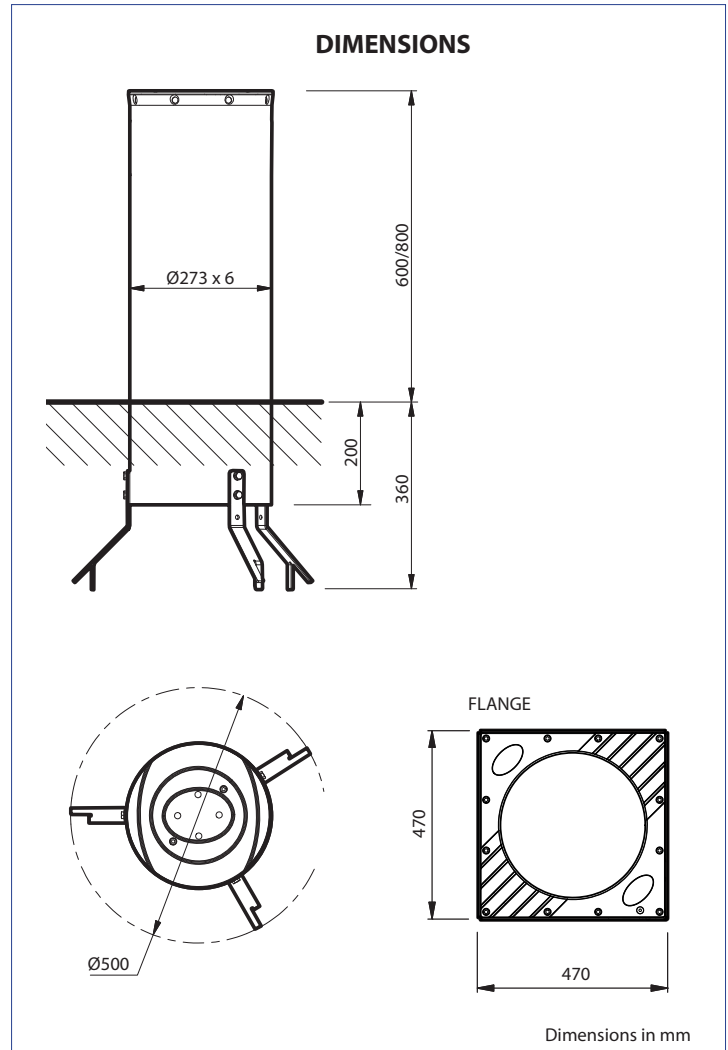


PRODUCT DATASHEET

GRIZZLY-F

Fixed bollard

Fixed bollard for bolting to the floor. Diameter and dimensions are the same as the automatic models. Available in two dimensions, with or without flange.



• Fixed bollard

• Main tube dimensions from floor level:

Ø273 x h.600 x sp.6 mm

Ø273 x h.800 x sp.6 mm

• Break-in resistance (from simulation):

667 000 J

• Impact resistance (from simulation):

20 000 J

• Available with or without flange

• Flange dimensions:

470 x 470 mm

• LED provided light cap (optional)

• Painted stem; stainless steel (optional)

• Customizable adhesive reflective H100 film (optional)

REFERENCE STANDARDS

Electromagnetic Compatibility: 2004/108/CEE; 93/68/CEE (EN55014-1; EN55014-2)

Low voltage: 2006/95/CEE; 93/68/CEE (EN60335-1(2002))

Machinery directive: 2006/42/CEE (EN60204-1)

TECHNICAL-ENVIRONMENTAL MAIN FEATURES

Rod out of the ground	GRIZZLY-F 600: Ø273 x h.600 x th.6 mm, steel Fe 360 (S 235 JR) *	GRIZZLY-F 800: Ø273 x h.800 x th.6 mm, steel Fe 360 (S 235 JR) *
Buried structure	Ø273 x h.200 mm	
Foundation	Concrete	
Break-in resistance (from simulation)	250 000 J	
Impact resistance (from simulation)	20 000 J	
Driven rod treatment	Cataphoresis and coating RAL7031 standard, other colour on request	
Passive visibility	Reflective film **	
Flange (optional)	Cast iron, cataphoresis black, 470x470 mm	
Top cover	Cast iron, cataphoresis black, LED lights (optional)	
Flange net weight (optional)	GRIZZLY-F 600: 40 kg	GRIZZLY-F 800: 48 kg
Flange gross weight (optional)	GRIZZLY-F 600: 46 kg	GRIZZLY-F 800: 55 kg
Bollard net weight	GRIZZLY-F 600: 55 kg	GRIZZLY-F 800: 63 kg
Bollard gross weight	GRIZZLY-F 600: 64 kg	GRIZZLY-F 800: 73 kg

* option, AISI304 or AISI316

** Customizable (optional)

ELECTRICAL FEATURES (optional)

Light power supply	KIT PS 24Vac 12 Vac ±10%, 50-60 Hz
Power	Light cable 24 Vac ±10%, 50-60 Hz (up to 80 bollards)
Power consumption	1 W for each bollard
Signalling	On the top with high intensity LEDs

For system composition and installation refer to the regulations in force in the country where the system is being installed.

ITEM SPECIFICATION

Fixed bollard for bolting to the floor. Diameter and dimensions the same as the automatic models. Available in two sizes:

- Ø275 x h.600 x th.6 mm, steel Fe 360 (S 235 JR). Finishing: cataphoresis, powder paint. Break-in resistance (from simulation) 250 000 J. Adhesive reflecting strip. Top cover compatible with high-brightness LED lights. Available with or without flange.

- Ø275 x h.800 x th.6 mm, steel Fe 360 (S 235 JR). Finishing: cataphoresis, powder paint. Break-in resistance (from simulation) 250 000 J. Adhesive reflecting strip. Top cover compatible with high-brightness LED lights. Available with or without flange.